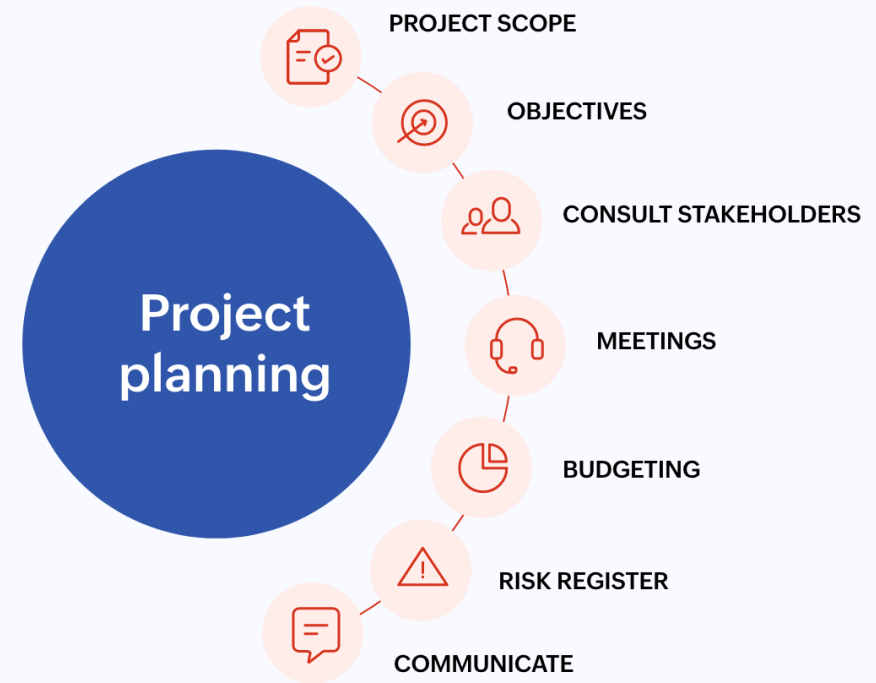


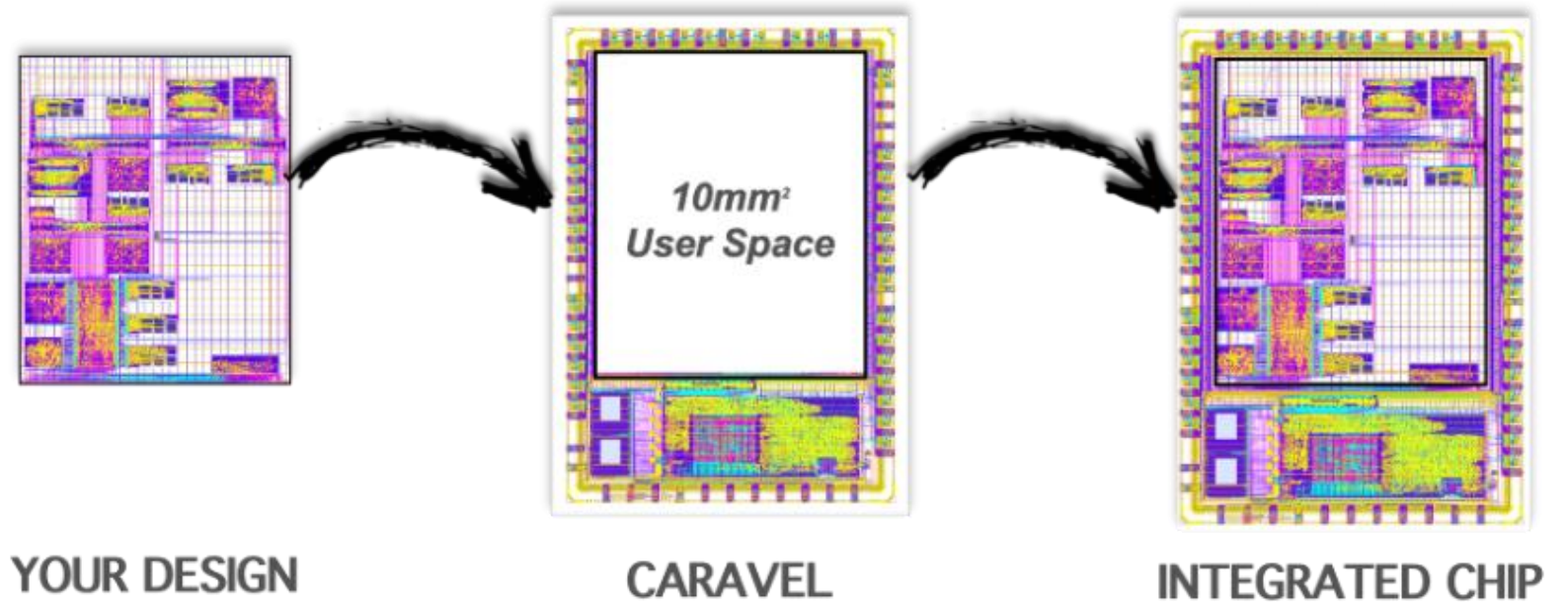
# PROJECT PLANNING

sdmay25-28



# PROJECT OVERVIEW

- Digital ASIC (Application Specific Integrated Circuit)
- Reprogrammable ISA
  - Extending RISC-v
  - CLU in ALU
- eFabless Process
- Caravel
- Verilog



# PROJECT MANAGEMENT STYLE

- AGILE
  - Iterative
  - Collaborative
  - Client involvement
  - Flexibility
- ROLES
  - Scrum master
  - Client
  - Development team



# TASK DECOMPOSITION

- Gantt Chart
  - Phases
- AGILE Decomposition
  - Issues & Assignment

GitLab.org > Issue Boards

Strategic Initiatives Search or filter results...

2018 Q3 3 231 +

Support refunds gitlab-org/css\_tooling#2 231  
auto closed

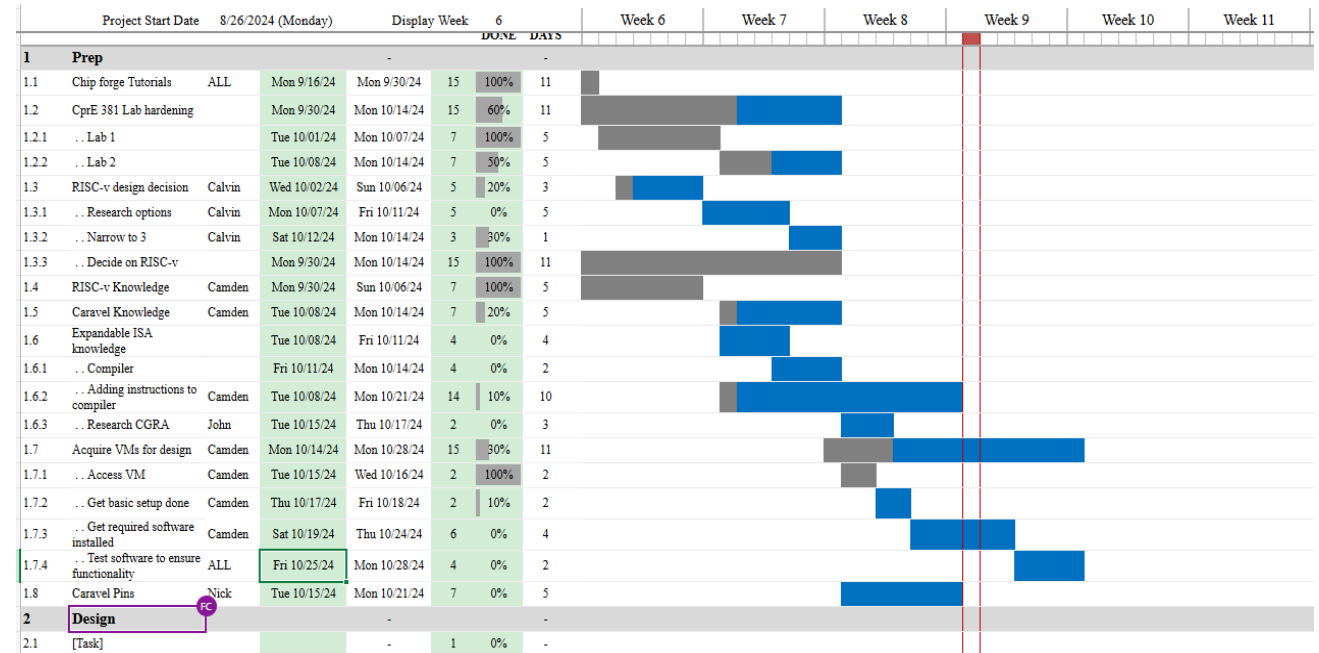
Login flow with security questions  
gitlab-org/gitlab-selenium-server#2

Deprecate cash payments  
gitlab-org/test-zero-config-ci-6#2  
AP3 SL3 payments

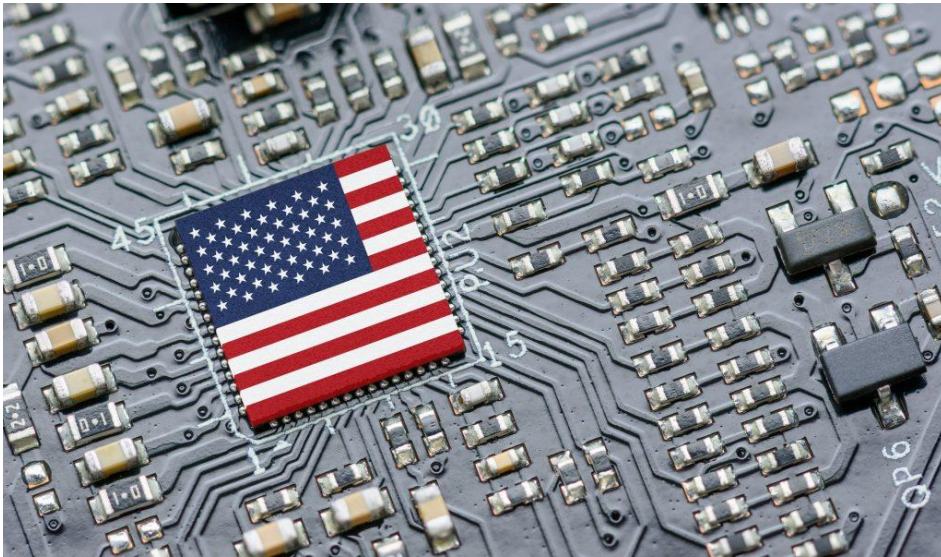
Phase 2 Rollout 2 23 +

Login reset flow gitlab-org/css\_tooling#1  
Geo

Payments upgrade gitlab-org/gitlab-svgs#4 23  
payments



# KEY MILESTONES



CPU IP Adoption

CLU (Custom Logic Unit) Creation

CLU Integration

Chip Hardening

Efabless Verification

Send off to fabricate! (April 11th)

Client's (Dr. Duwe's) Satisfaction



# KEY RISKS & MITIGATION



## Infeasibility

Chance: Unlikely

Consequence: Major

Mitigation: Talk through ideas thoroughly with our advisor.



## Time Delay

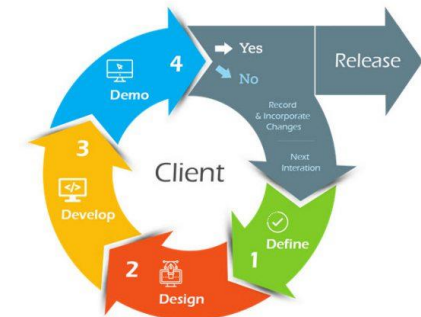
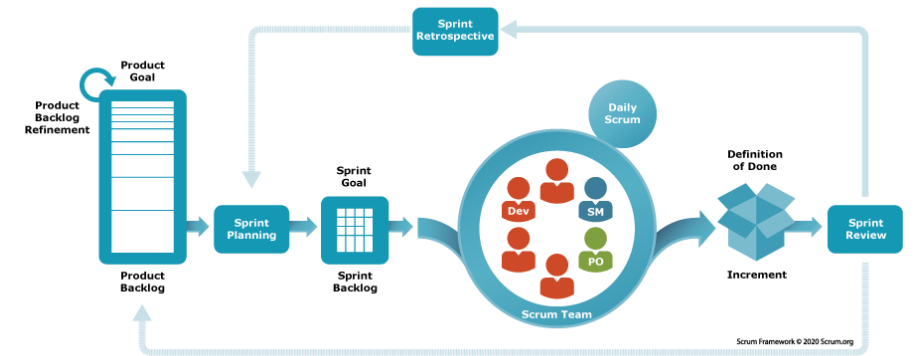
Chance: Likely

Consequence: Minor

Mitigation: Ensure that issues are addressed as quickly as possible. Careful planning.

# CONCLUSION

- We have developed a good understanding of the frameworks for effective project management, SCRUM, AGILE, Gantt charts
- Going forward we can effectively manage the many steps/tasks needed



**Gantt Chart**

Task Name	Q1 2019			Q2 2019		Q3 2019
	Jan 19	Feb 19	Mar 19	Apr 19	Jun 19	Jul 19
Planning						
Research						
Design						
Implementation						
Follow up						